



41a Firgrove Hill , Farnham, GU9 8LP

A lovely ground floor garden flat with spacious rooms and character features situated close to Farnham town, station and local shops. The property has it's own private garden to the rear, parking and a detached garage that could be converted (stpp) into a garden room/studio. No onward chain.

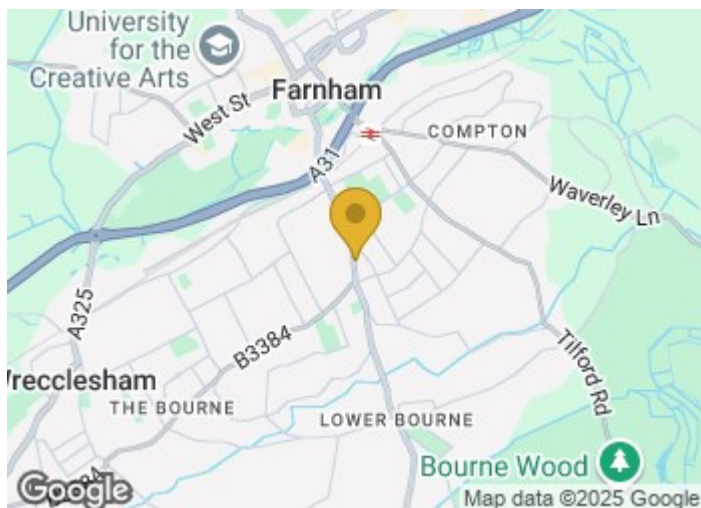
Price Guide £425,000

41a Firgrove Hill

, Farnham, GU9 8LP



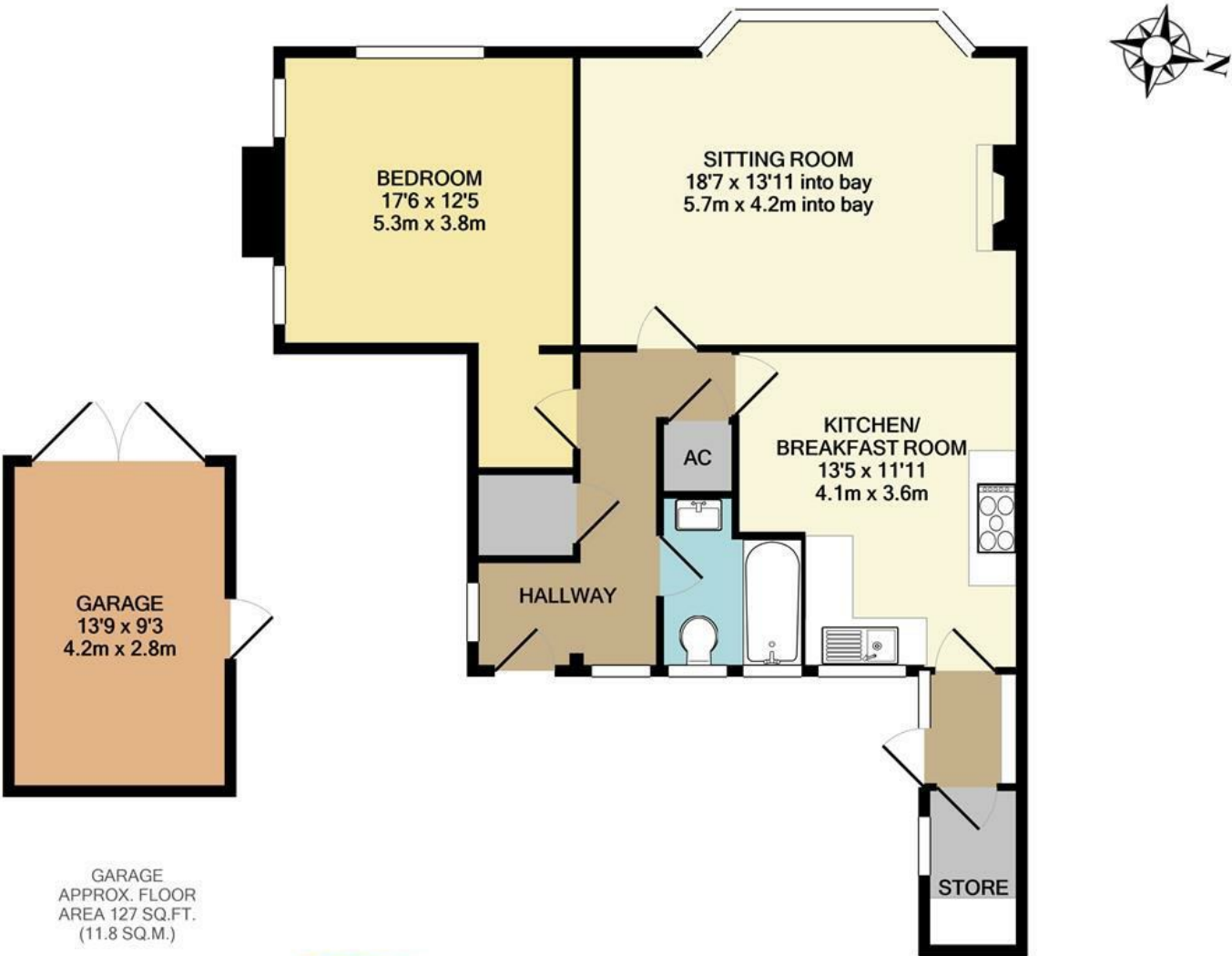
- Entrance hall
- Kitchen/breakfast room
- Private garden with patio and lawn
- No onward chain
- Sitting room with space for large dining table . Bay window and feature fireplace
- Utility/storage room
- Detached garage and parking
- Double bedroom
- Bathroom
- Close to Farnham town, station and shops on the Ridgway



Directions



Floor Plan



GARAGE
APPROX. FLOOR
AREA 127 SQ.FT.
(11.8 SQ.M.)



GROUND FLOOR
APPROX. FLOOR
AREA 753 SQ.FT.
(69.9 SQ.M.)

TOTAL APPROX. FLOOR AREA 880 SQ.FT. (81.8 SQ.M.)

Whilst every attempt has been made to ensure the accuracy of the floor plan contained here, measurements of doors, windows, rooms and any other items are approximate and no responsibility is taken for any error, omission, or mis-statement. This plan is for illustrative purposes only and should be used as such by any prospective purchaser. The services, systems and appliances shown have not been tested and no guarantee as to their operability or efficiency can be given

Made with Metropix ©2021

These particulars, whilst believed to be accurate are set out as a general outline only for guidance and do not constitute any part of an offer or contract. Intending purchasers should not rely on them as statements of representation of fact, but must satisfy themselves by inspection or otherwise as to their accuracy. No person in this firms employment has the authority to make or give any representation or warranty in respect of the property.

